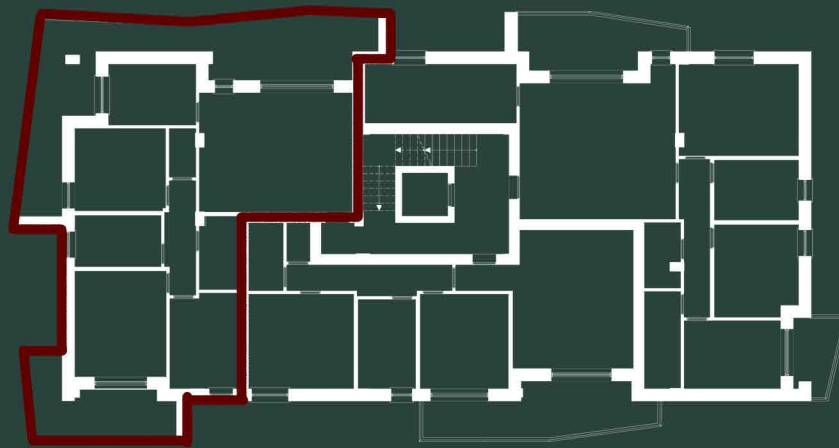
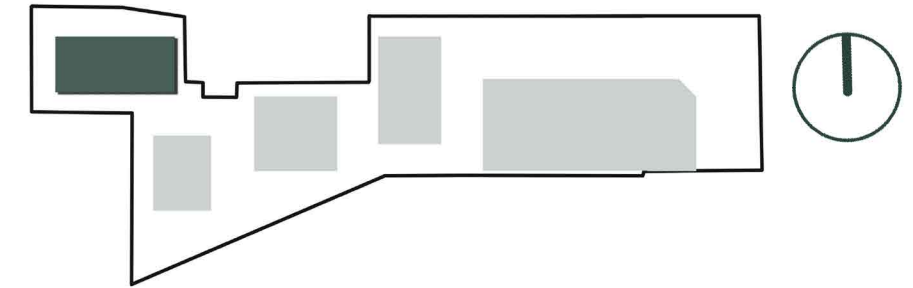


RESIDENZIALE MORANE



KEYPLAN



EDIFICIO D
 APPARTAMENTO
D01
 PIANO PRIMO



VENDUTO

Destinazione	PIANO	MQ	%	Sup. Commerciali
Appartamento 01	Primo	111,52	100%	111,52
Balcone	Primo	34,7	50%	17,35
Balcone	Primo	13,11	50%	6,56
Totale				135,43