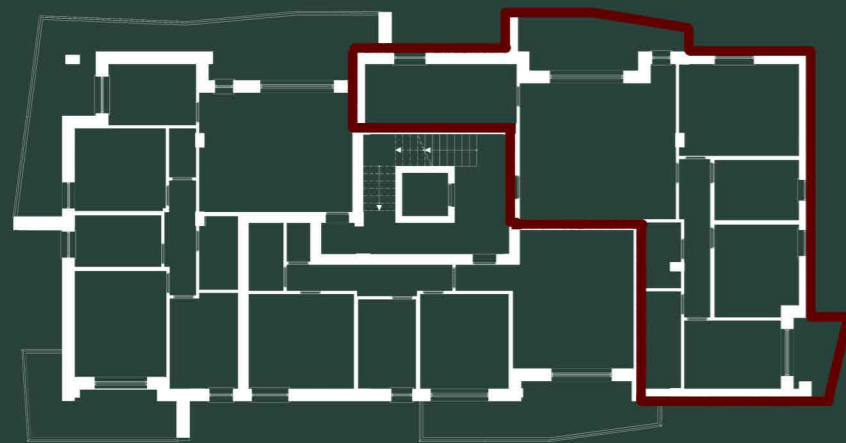
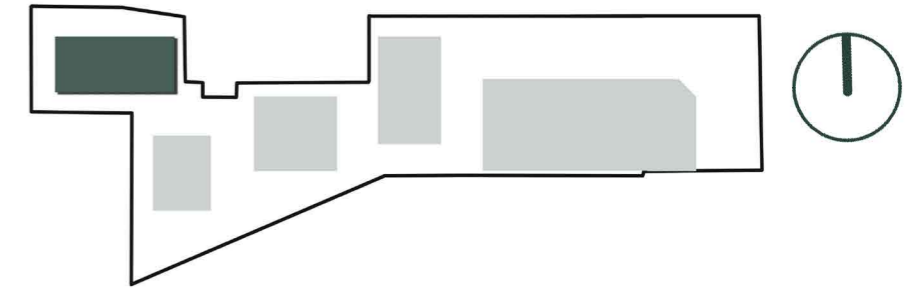


RESIDENZIALE MORANE



KEYPLAN



EDIFICIO D
 APPARTAMENTO
D03
 PIANO PRIMO



VENDUTO

MQ	PIANO	MQ	%	Sup. Commerciali
Appartamento 03	Primo	132,5	100%	132,50
Balcone	Primo	12,5	50%	6,25
Balcone	Primo	5,55	50%	2,78
Totale				141,53