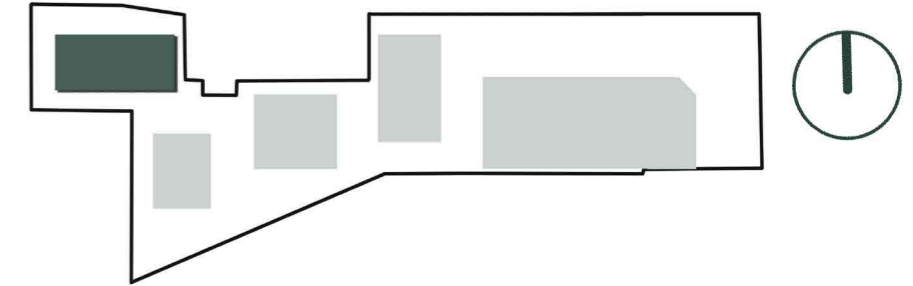


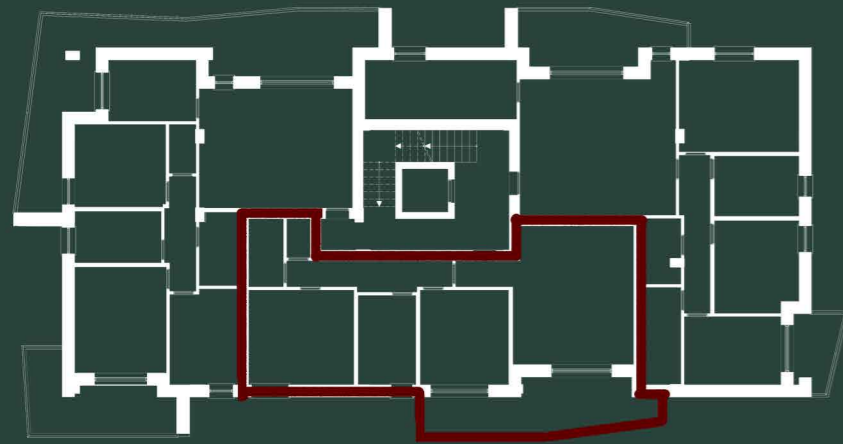
RESIDENZIALE MORANE



KEYPLAN



VENDUTO



EDIFICIO D
 APPARTAMENTO
D02
 PIANO PRIMO



Destinazione	PIANO	MQ	%	Sup. Commerciali
Appartamento 02	Primo	90,05	100%	90,05
Balcone	Primo	15,75	50%	7,88
Totale				97,93