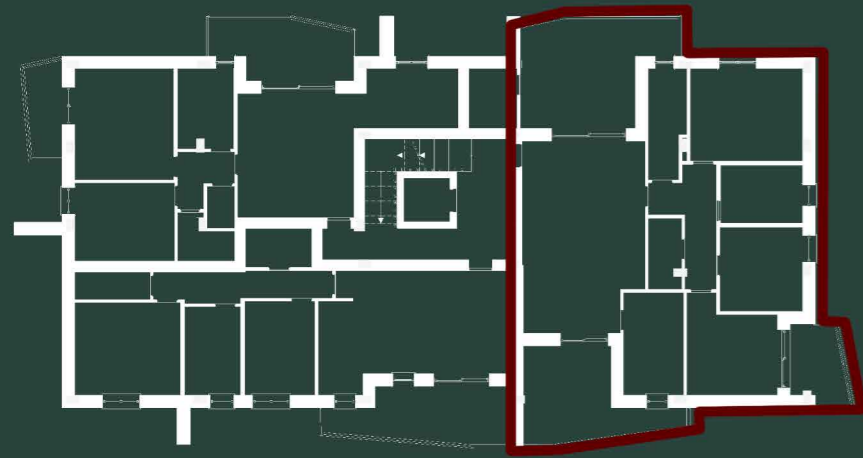


RESIDENZIALE MORANE



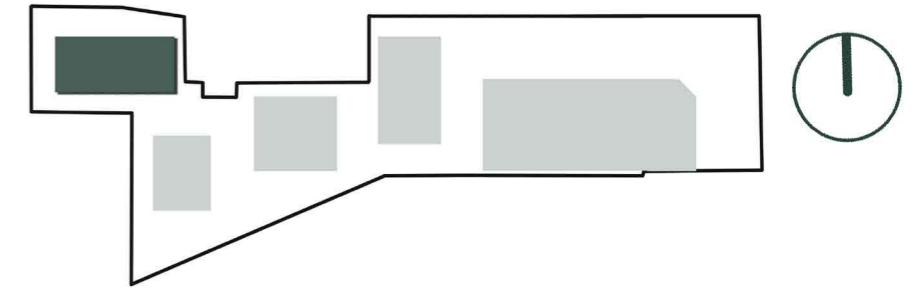
EDIFICIO D

APPARTAMENTO

D06

PIANO SECONDO

KEYPLAN



MQ	PIANO	MQ	%	Sup. Commerciali
Appartamento 06	Secondo	127,14	100%	127,14
Balcone	Secondo	21,27	50%	10,64
Balcone	Secondo	16,23	50%	8,12
Balcone	Secondo	6,85	50%	3,43
Rip. esterno	Secondo	6,42	70%	4,49
Totale				153,81