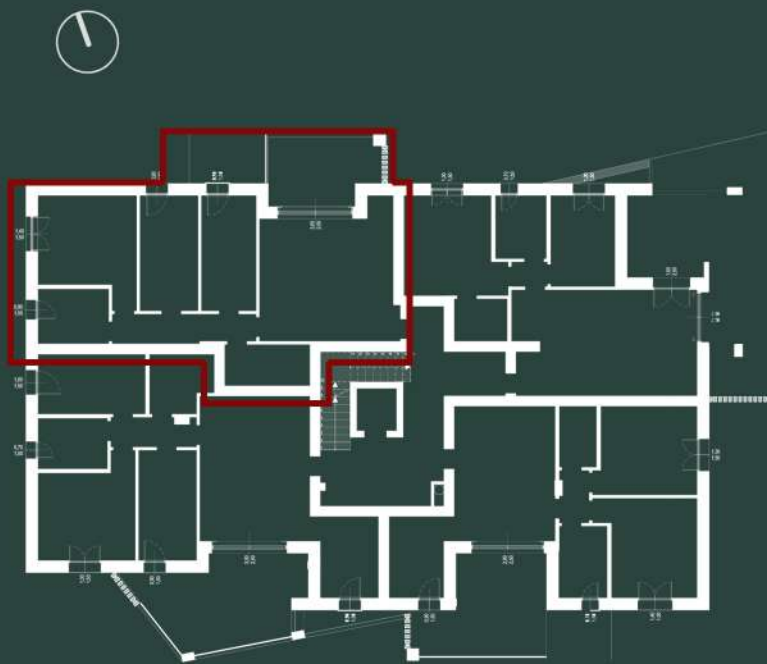
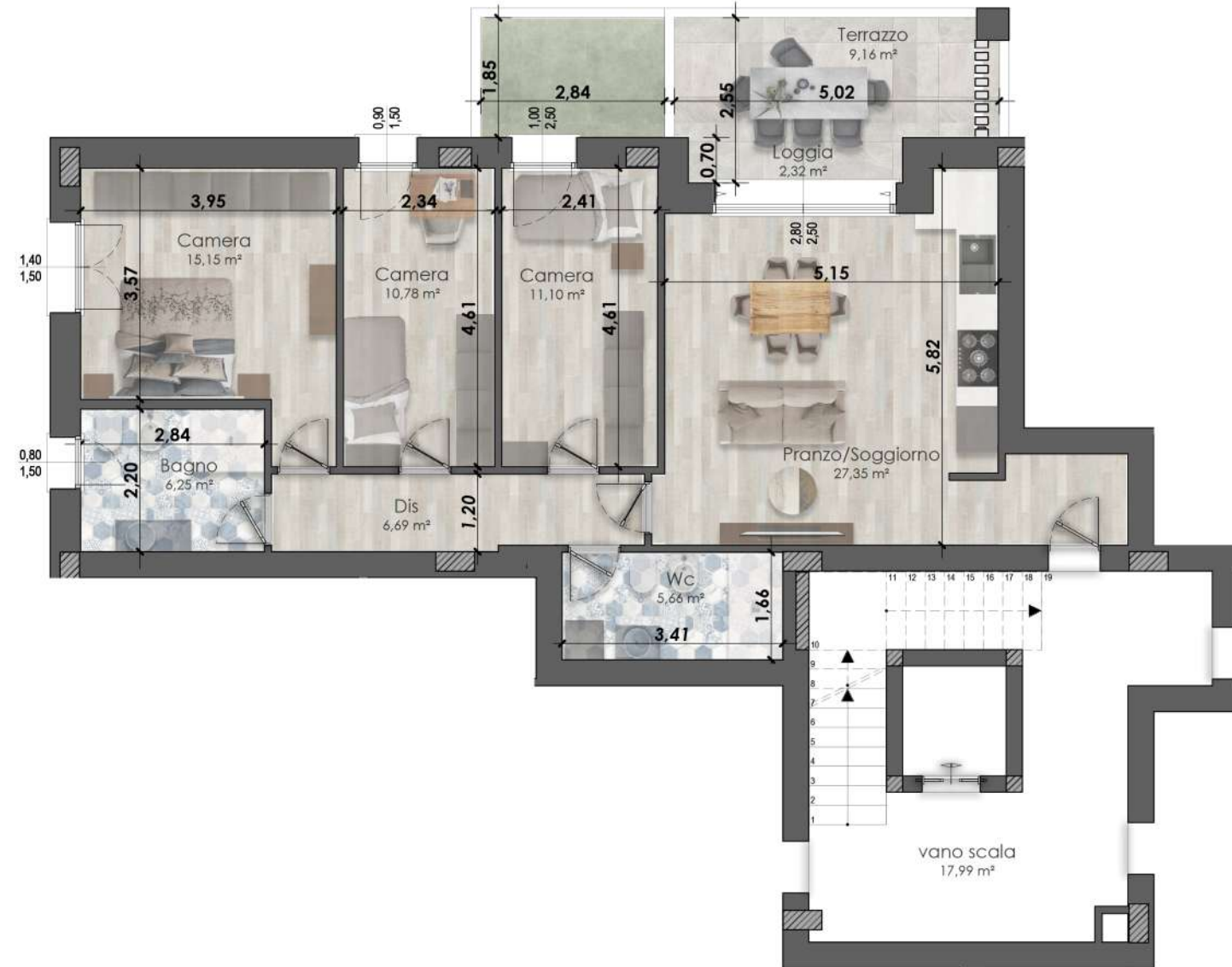


RESIDENZIALE VIA BILLO'



EDIFICIO LOTTO 1

APPARTAMENTO

05

PIANO PRIMO

APT05	APPARTAMENTO	PRIMO	106,12	100%	106,12	113,81
	TERRAZZO	PRIMO	12,94	50%	6,47	
	GIARDINO PENSILE	PRIMO	6,11	20%	1,22	