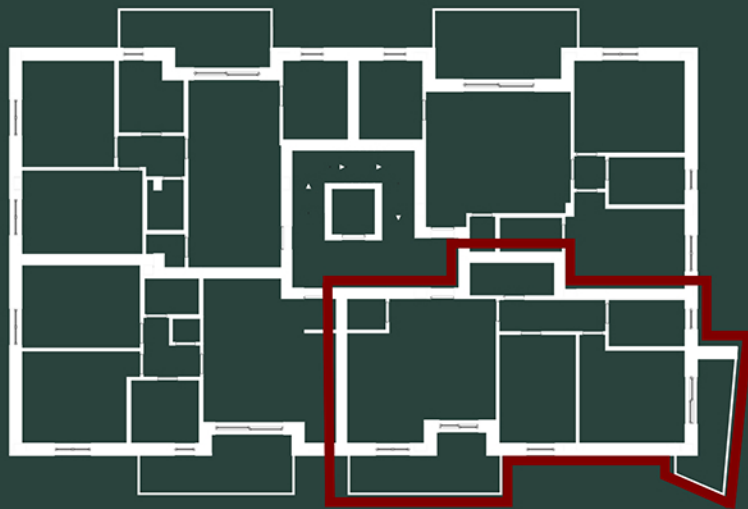


# RESIDENZIALE MORANE



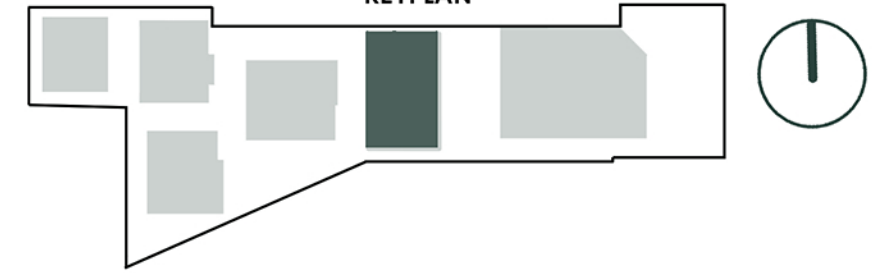
EDIFICIO A

APPARTAMENTO

**A02**

PIANO PRIMO

KEYPLAN



A2	APPARTAMENTO	PRIMO	86,66	100%	86,66	95,81
	BALCONE	PRIMO	7,88	50%	3,94	
	BALCONE	PRIMO	10,42	50%	5,21	